

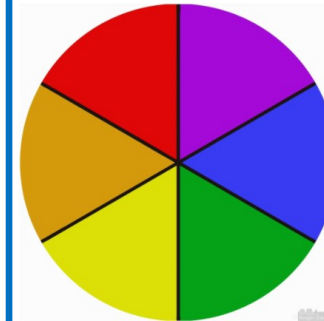
Year 1 Penguins

Art

Autumn 1



Colour

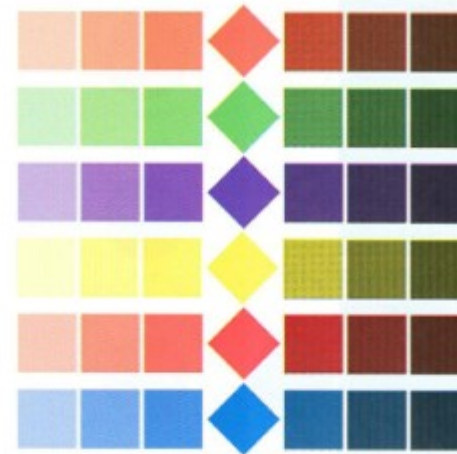


The Colour Wheel

The colour wheel shows the secondary colours between the primary colours that are mixed together in order to produce them.

Key Vocabulary	Definition
Cold colours	Colours that make you think of cold things. Cold colours are called green, blue and violet
Complementary colours	Any two colours that are opposite each other on the colour wheel, such as yellow and purple
Mix	To combine paints to produce different colours, tints or shades
Primary Colours	The group of colours from which all other colours can be obtained by mixing. The 3 primary colours are red, yellow and blue
Secondary Colour	A colour resulting from the mixing of two primary colours. The secondary colours are green, orange and purple
Shade	A darker colour created by mixing black with any colour
Tint	A lighter colour created by mixing white with any colour

Shading and Tinting



Shading is when you add a small amount of black to a colour in order to make it darker.

Tinting is when you add a small amount of white to a colour in order to make it lighter

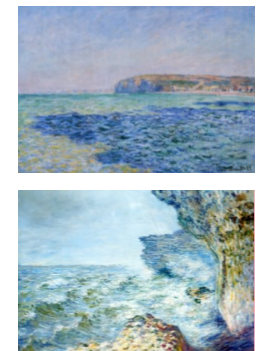
David Hockney

David Hockney is considered one of the most influential British artists of the 20th Century. David Hockney used tints of blue to create this picture titled A Bigger Splash. He was inspired by the strong colours that the Californian sunlight created. David Hockney created many different paintings of swimming pools when he moved to California in 1964.



Claude Monet

Claude Monet was a French impressionist artist who was interested in the different effects of the weather on the sea. He visited different coastal locations in France at different times of the year to look at how the sea changes different seasons. He used tints and shades to paint the sea in its different states.



End of Unit: Colours

What colours do you need to mix to create purple?

.....

.....

How many primary colours are there?

.....

.....

What can you use tints and shades of blue to paint?

.....

.....