



Year 1
Summer 1 2021
Science
Plants

Curriculum Coverage

Ask simple questions and recognising that they can be answered in different ways

Observing closely, using simple equipment

Identifying and classifying

Use observations and ideas to suggest answers to questions

Gather and record data to help in answering questions.

Identify and name a variety of common wild and garden plants, including deciduous and ever-green trees

Key Knowledge

A plant



A living thing that usually grows from the ground.

Garden Plant

A flower grown especially in a garden.
Some common garden plants to be able to recognise and name:

Rose

Daffodil

Sunflower

Tulip

Wild Plant

A wild plant will grow by itself. It does not need to be cared for.

Some common wild plants to be able to recognise and name:

Daisy

Dandelion

Buttercup

Deciduous Trees



Deciduous trees lose their leaves in the autumn every year.

Their leaves are generally broad, flat and have veins running through them.

Evergreen Trees



Evergreen trees have green leaves all year round. Their leaves are generally thick, waxy and narrow like needles.

Seed

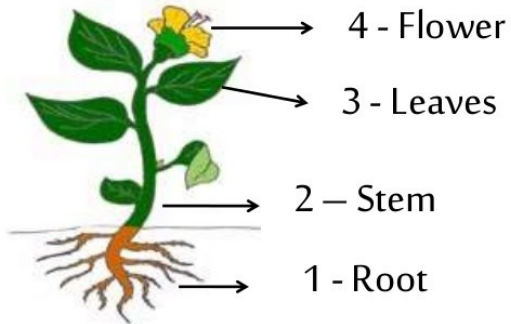


The part of a flowering plant that can develop into a new plant.



Year 1
Summer 1 2021
Science
Plants

Parts of a Plant



Vocabulary

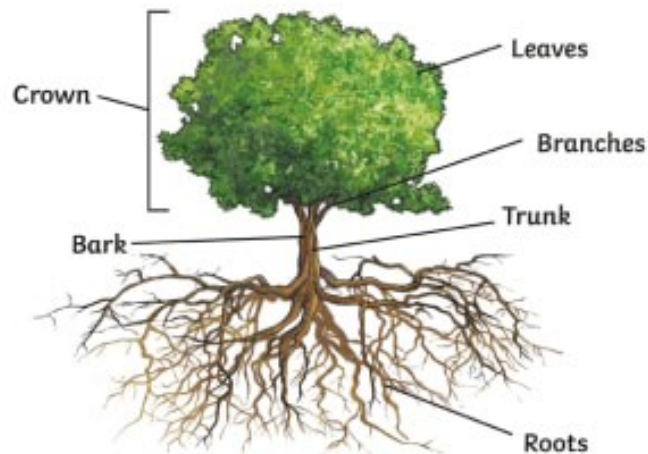
Root - The part of a plant that grows underground.

Flower - the part of a plant that is often brightly coloured and grows at the end of the stem.

Stem - the thin, upright part of a plant on which the flowers and leaves grow.

Leaf/leaves - the part of a tree or plant that are flat, thin and usually green.

Parts of a Tree



What Plants Need to Grow

