

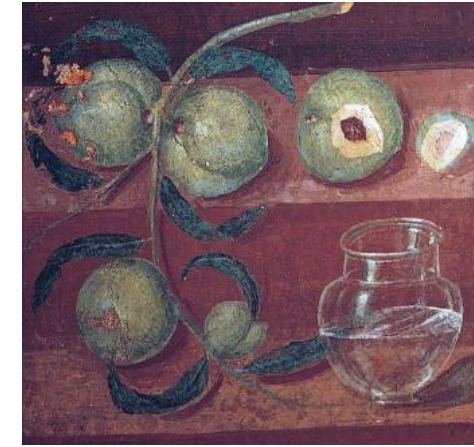
Year 3 Magpies

Art

Summer 1

Still life form

Still life with peaches and a glass (50CE)



Key Vocabulary	Definition
cast shadow	where an object makes a shadow on something else e.g. table underneath it
cross hatching	technique of creating tone by drawing lines which cross over each other
form	Form means the 3d shapes in art: in a drawing or painting an artist can create the illusion that an object is 3d rather than flat.
highlight	the parts of an object where the light is strongest or lightest
mid-tone	tones between the highlights and shadows
shade/ shadow	the parts of an object that are darker
still life	A picture of something that does not move.
tints/shades	A tint is the mixture of a colour with white (increases lightness), and a shade is the mixture of a colour with black (reduces lightness).
tone	how dark or light something is: tones are created by the way light falls on a 3d object

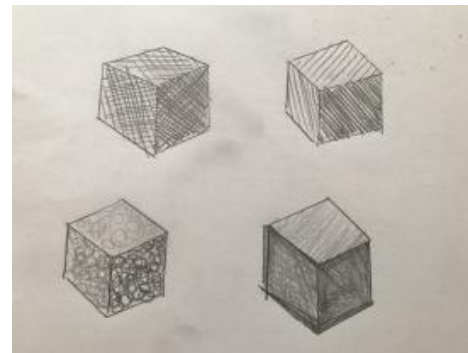
Andy Warhol is known for his bright, colourful paintings and prints of subjects ranging from celebrities including Marilyn Monroe and Mohammed Ali, to everyday products such as cans of soup and Brillo pads.



Still life, pitcher, and fruit (1894) Paul Cezanne



Different ways to create form by using tone.



Who was Giorgio Morandi?

Giorgio Morandi was an Italian painter and printmaker who specialized in still life paintings. His paintings are noted for their tonal subtlety in depicting simple subjects, mainly vases, bottles, bowls, flowers, and landscapes.

