

Year 5 Merlins

Art

Summer 1

Style in Art

Style is basically the manner in which the artist portrays his or her subject matter and how the artist expresses his or her vision. Style is determined by the characteristics that describe the artwork, such as the way the artist employs form, colour, and composition, to name just a few.

Rococo style

Thomas Chippendale: Ribbon-backed chair



Modernist style

Marcel Breuer: Wassily chair



Key Vocabulary	Definition
abstract	Art that doesn't try to look like something but uses shapes, colours, lines and form to achieve an effect.
asymmetrical	Not symmetrical, different on one side of the design to the other.
brushstroke	The mark made by a paintbrush.
colour theory	Information about how to create different colours by mixing (e.g. how to mix primary colours to make secondary colours) and the effect of different colour combinations (e.g. what happens when you put two complimentary colours next to each other)
complementary colours	Any two colours which are opposite each other on the colour wheel, for example yellow and purple.
Modernist	A style of art and design starting in the 1850s that rejected previous artistic styles, was often abstract, experimental and focussed on materials.
Rococo	A style of art and design from the 1700s which uses elaborate decoration, curvy lines and light colours. The style is light-hearted and pretty.
style	How a piece of art looks. Style is often divided into the style of the period of time in history, a country, group of artists, art which is about a particular idea or how an artist creates a piece of work.
technique	A way of doing something, like painting or creating art.

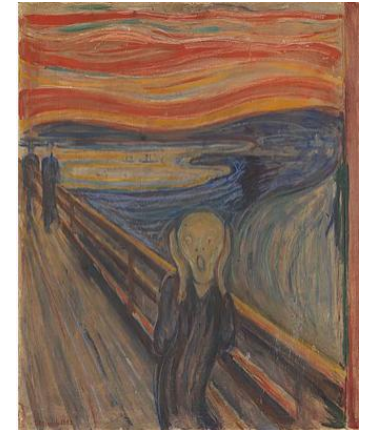
Romanticism

George Stubbs: Whistlejacket



Expressionist

Edvard Munch: The Scream



Abstract: Wassily Kandinsky; Colour Study



Impressionist: Claude Monet; Japanese Footbridge



Colour Wheel

Primary Colours:

Red Blue Yellow

Secondary Colours:

Purple Green Orange

