

Year 1 Swans

Art

Summer 1



Sculpture

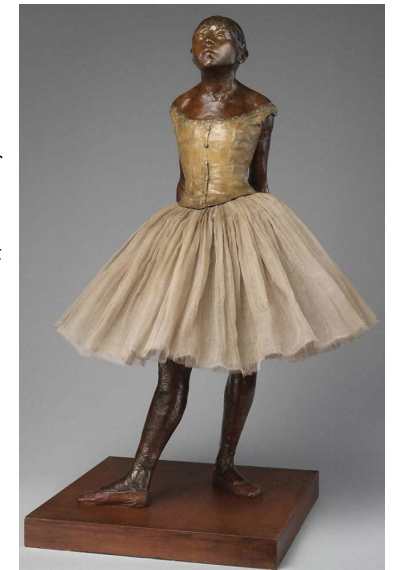
Barbara Hepworth

Barbara Hepworth (1903-1975) made sculptures in bronze and wood and sometimes added string to them. Lots of her sculptures were influenced by the hills in Yorkshire and the cliffs in Cornwall. She made her bronze sculptures in different colours.



Edgar Degas

Edgar Degas was a French painter and sculptor who lived from 1834-1917. He is famous for drawing dancers and more than half of his works are of dancers. "Little Dancer Aged Fourteen" was his only sculpture to be exhibited during his lifetime. It is a nearly life-size wax figure with real hair and dressed in a cloth tutu. It provoked a strong reaction from critics, most of whom found its realism extraordinary but thought the dancer was ugly. Degas created a substantial number of other sculptures during a span of four decades.



Angel of the North

Antony Gormley's Angel of the North, 1998 (Gateshead) is a huge sculpture which stands just off the A1 in Gateshead. It is a steel sculpture of an angel, 20 metres tall and 54 metres across. It is believed to be the largest angel sculpture in the world. It is one of the most viewed pieces of art in the world - seen by more than one person every second. It weighs 200 tonnes.



Key Vocabulary	Definition
bronze	A type of metal that can be melted and poured into a mould to make a cast sculpture
casting	A way of making a sculpture by pouring liquid, e.g., liquid plaster or metal, into a mould
maquettes	A small model of a planned sculpture
model	A 3D plan for a sculpture
mould	A hollow container used for casting
sculptor	A person who makes a sculpture
sculpture	Art that you can hold and see all around: a sculpture is 3D
sketch	A rough drawing which maybe a plan for a work of art, perhaps a sculpture
statue	A large sculpture of a person
2D art	A flat piece of art, e.g., a drawing, a painting or a photo is 2 dimensional art
3D art	Art that you can hold and see all around: a sculpture is 3 dimensional

Casting

Casting means to make a sculpture by pouring liquid into a mould. A mould is a hollow container used for casting. The liquid can be plaster, or it can be liquid metal – this is often bronze.



End of Unit: Sculpture

What is a sculpture?

.....

What are sculptures often made from?

.....

.....

Name a famous sculpture.

.....

.....