

# Swans Science Summer 1

## Plants

### Deciduous and Evergreen trees

Evergreen trees don't lose their leaves in Autumn. They are green all year.



Deciduous trees lose their leaves in Autumn. The leaves change colour and fall to the ground. The leaves grow again in Spring.

Key Vocabulary	Definition
<b>absorb</b>	To soak up water
<b>deciduous</b>	A tree that loses its leaves every year
<b>evergreen</b>	A tree that keeps its green leaves through the year
<b>flower</b>	The part of the plant that is often brightly coloured and where the seed or fruit often grows
<b>germinate</b>	The process of a plant growing out of a seed
<b>gravity</b>	The force which pulls things towards the Earth
<b>grow</b>	A natural development by increasing in size
<b>leaves</b>	Part of a plant which usually grows off the stem
<b>light</b>	The brightness that comes from the Sun
<b>nutrients</b>	A substance that plants need in order to live and grow
<b>plants</b>	A living thing that grows in earth and in water
<b>reproduce</b>	To produce a copy of something
<b>roots</b>	The part of a plant which grows under the soil
<b>seeds</b>	Plants grow from seeds
<b>stem</b>	The part of a plant which absorbs water and nutrients from the soil
<b>temperature</b>	The warmth of something
<b>wind</b>	The natural movement of the Earth which can help to disperse seeds from their plants

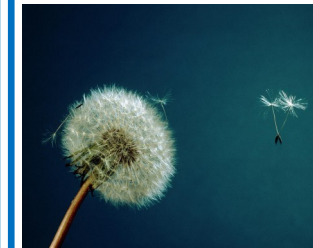
### Germination

Germination is the process by which a plant grows from a seed. Seed germination depends on the conditions it is placed in. A seed needs the right temperature, water, oxygen and light in order to be able to successfully germinate.



### Reproduction

Plants make seeds to germinate, to make new plants. They need the seeds to spread out and land somewhere suitable for the seeds to be able to germinate. Seeds can be spread using different methods



including gravity, water, animals and wind. Once the seeds have been dispersed they are able to start growing again.

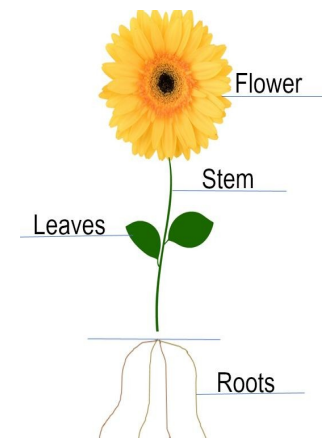
### Parts of a plant:

**Roots**—the part of the plant which remains under the soil, absorbing water and nutrients from the soil.

**Stem**— Supports the leaves and the flower, moving water around the plant.

**Leaves**— Helps to make food for the plants.

**Flower**—The bright coloured part of the plant which produces seeds and fruit.



*End of Unit: Plants*

*What is the difference between a deciduous and evergreen tree?*

.....  
.....

*What are the different ways a seed can be dispersed?*

.....

*What conditions do plants need in order to be able to grow effectively?*

.....  
.....